

# **Seymour Centre**

## **Visual Story**

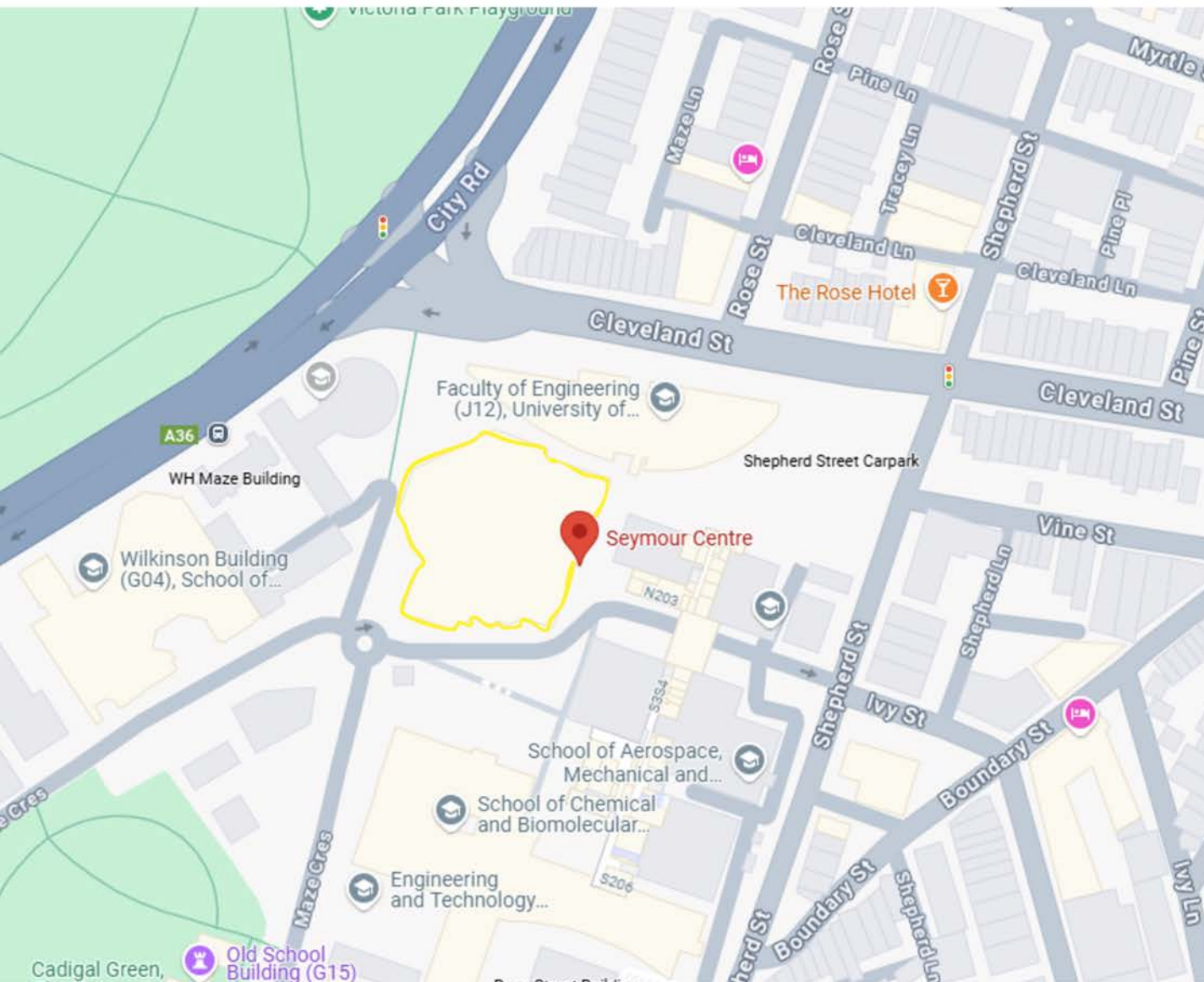
# Welcome to Seymour Centre

Seymour Centre is the University of Sydney's multi-venue performing arts centre.



# Location

Cnr City Rd and  
Cleveland St,  
Chippendale NSW 2008



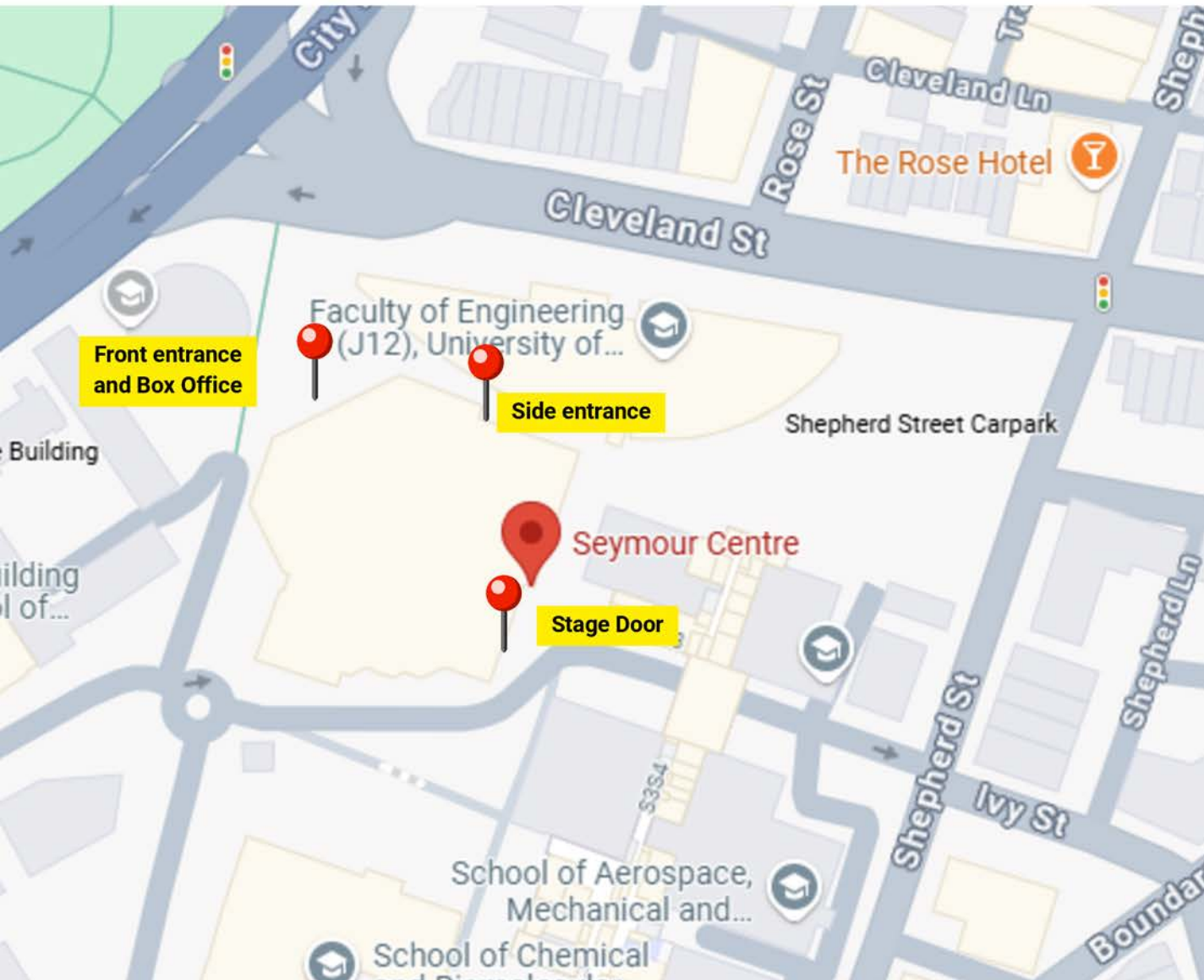


# Entrances

The primary entrance for patrons is by our Box Office which is located at the corner of Cleveland St and City Road.

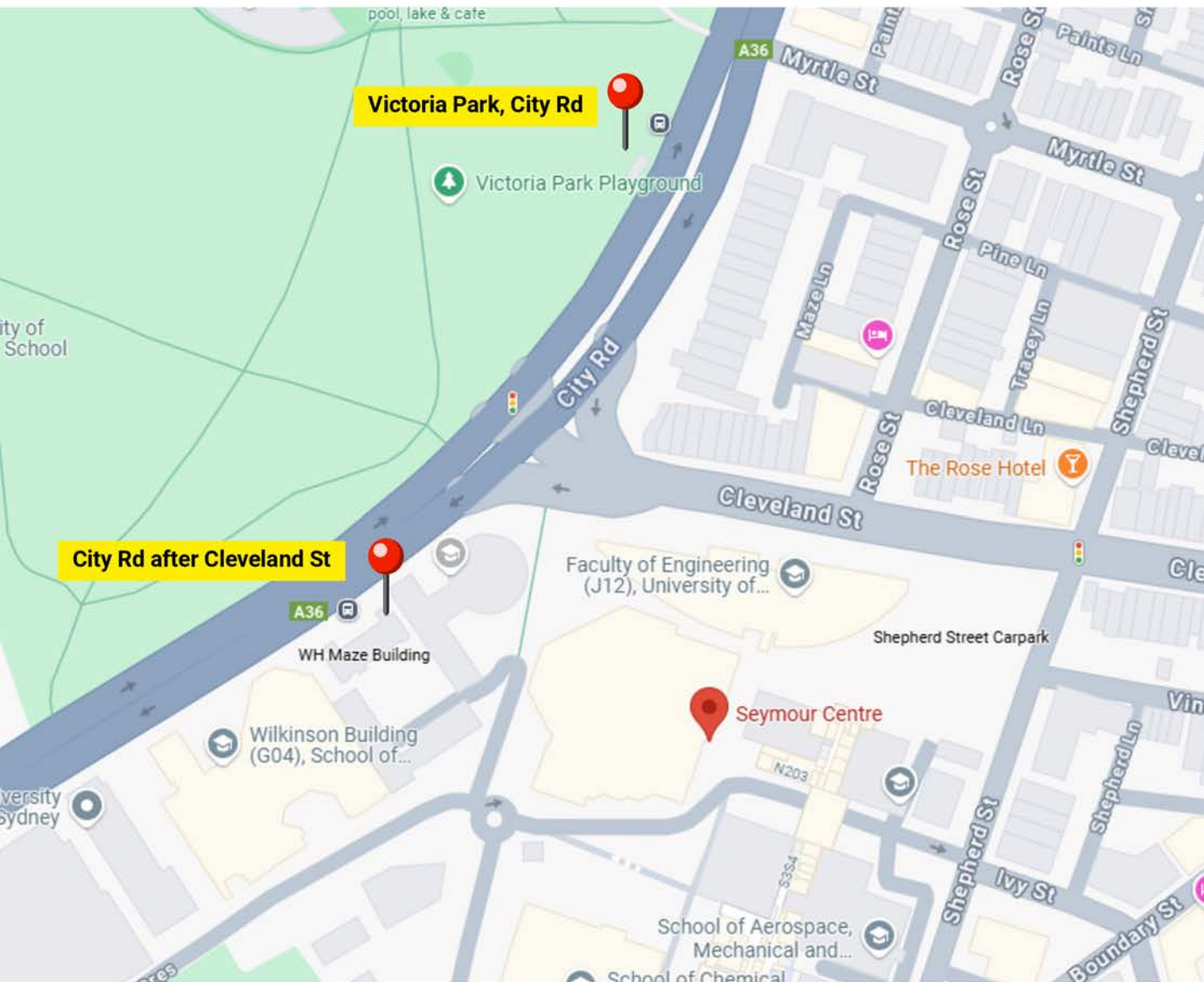
Stage Door is our back-of-house entrance which is located off Blackwattle Creek Lane and Maze Crescent.

If you are watching an event at Seymour Centre, you will use the front or side entrance.



# Bus Stops

There are two bus stops on City Rd which have frequent services throughout the day.

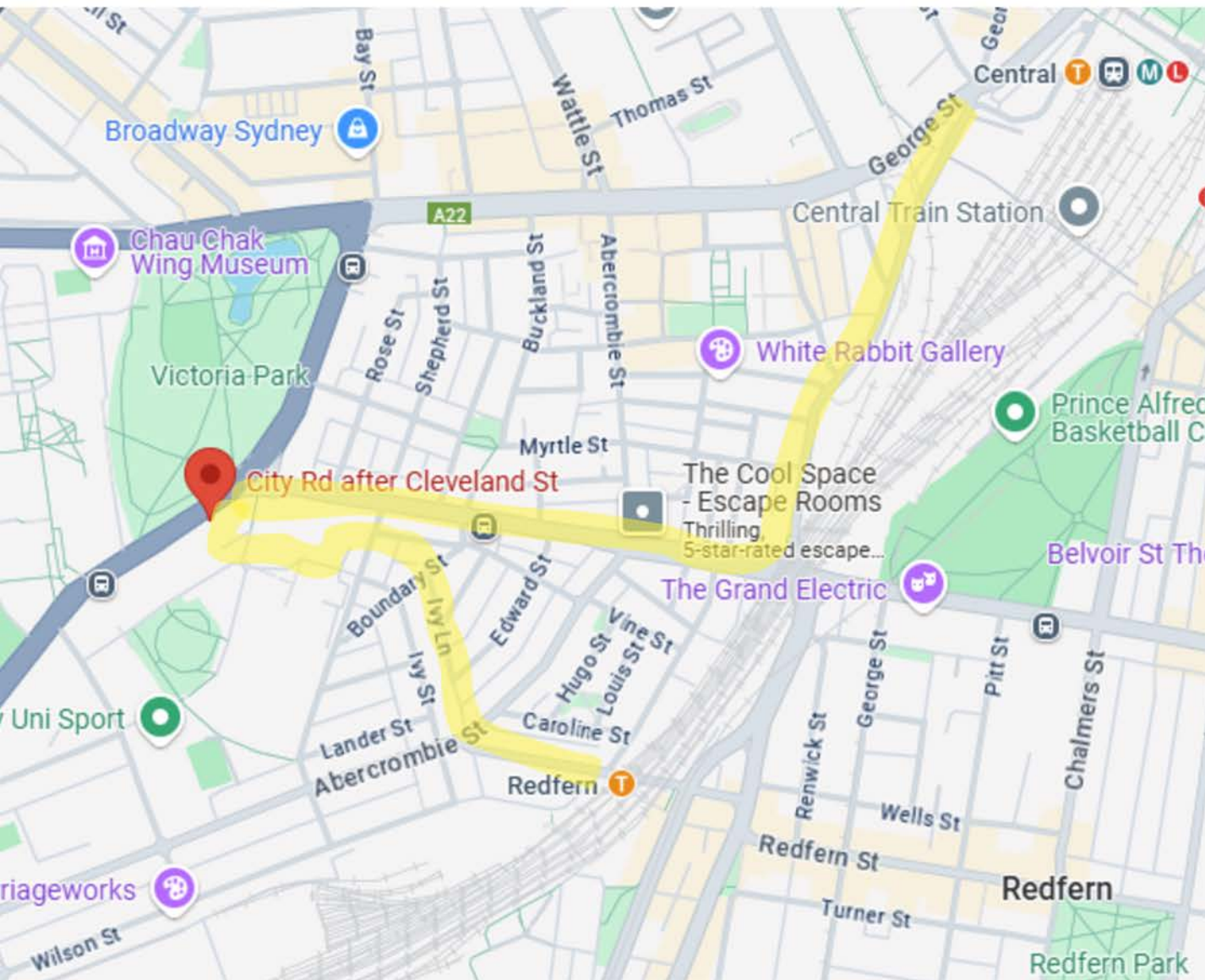




# Train Stations

The closest train station is Redfern Station which is a 10-minute walk via Ivy St.

Central Station is a 20-minute walk via Cleveland St.

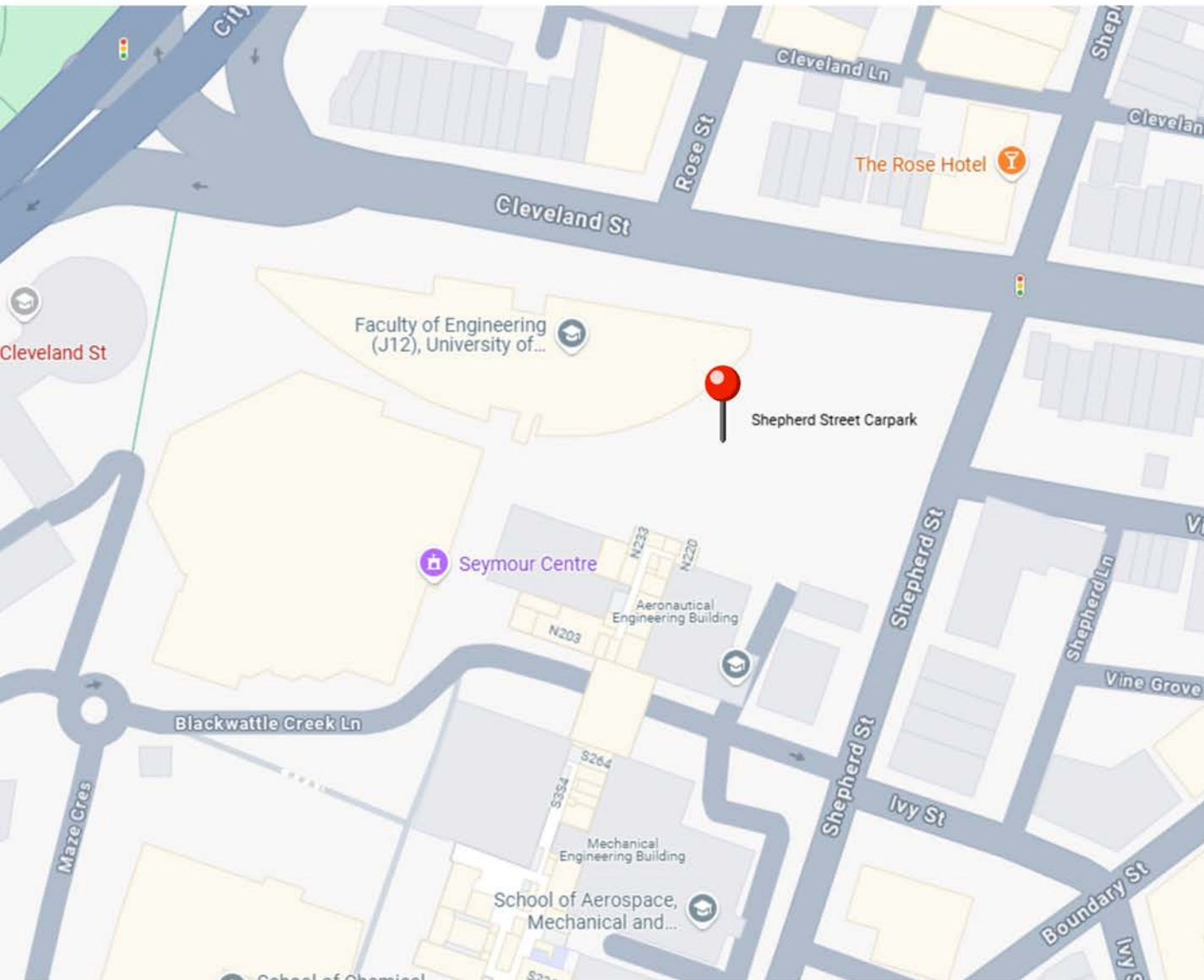


# Parking

The closest secure car park is the Shepherd St multi-storey car park located on the corner of Cleveland St and Shepherd St.

Parking costs \$4 per hour, up to a maximum charge of \$24 for 24 hours, seven days a week. Payment is managed through the CellOPark app.

The Shepherd St car park is managed externally and can often be full during university semester times.

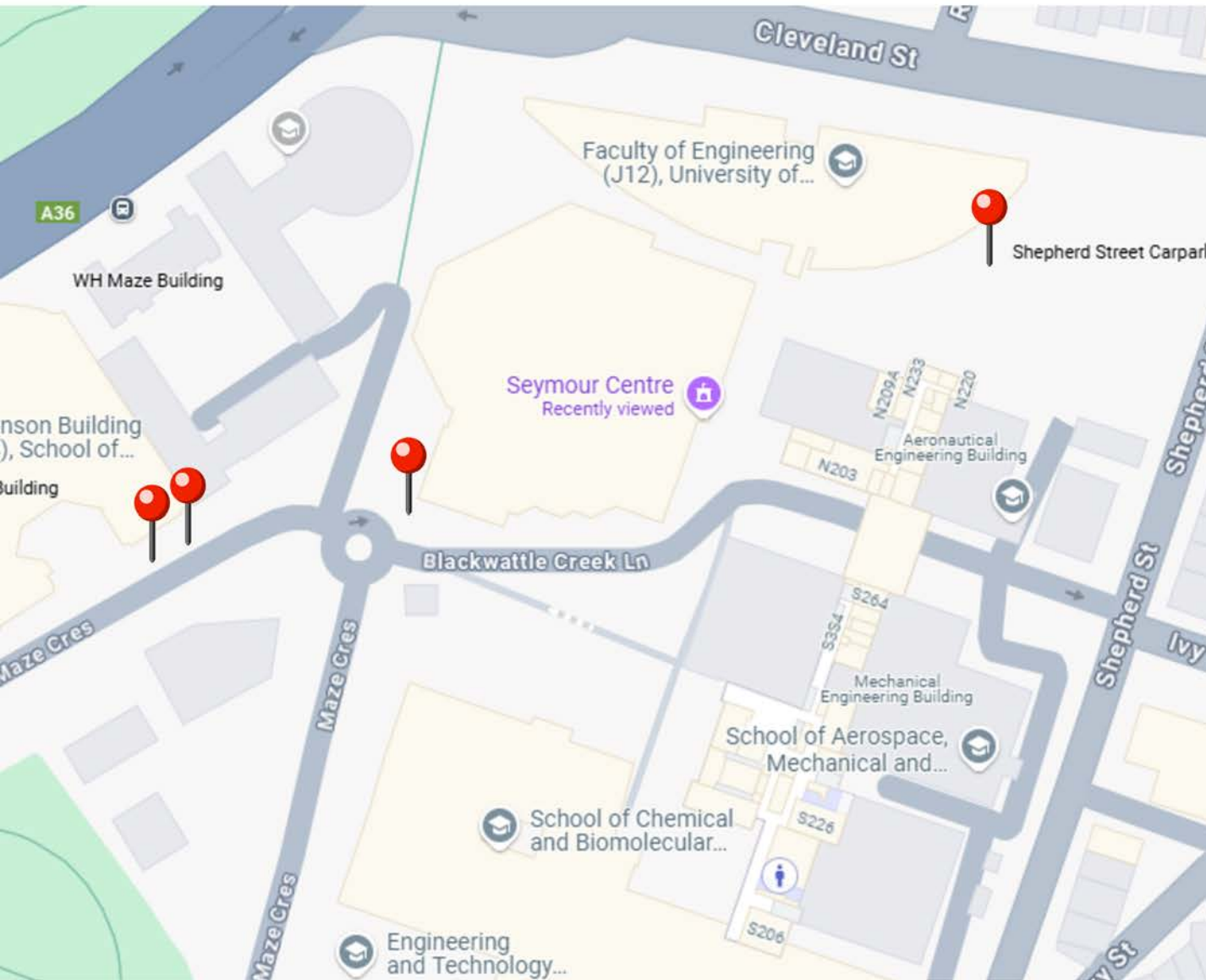




# Access Parking

There are three accessibility parking spaces close to Seymour on Maze Crescent and three accessibility parking spaces on Level 3 of the Shepherd St Carpark.

All accessibility car spaces are available on a first-come-first-served basis.





# Front Entrance

This is what Seymour Centre looks like from the front entrance.

This entrance has level access from City Rd.



# Side Entrance

This is what Seymour Centre looks like from the side entrance.

This entrance has level access from Level 3 of the Shepherd St carpark via the ramp.





# Stage Door

This is what Seymour Centre looks like from the back entrance at Stage Door.



# Box Office

This is what the Seymour Centre Box Office looks like.

Our Box Office is staffed with friendly customer service representatives 9am - 5pm Monday - Friday (excluding public holidays) and one hour prior to all events.

Seymour Centre does not have a cloak room.





# Box Office Cafe

This is what the Seymour Centre Box Office Cafe on Level 1 looks like.

Here you can purchase an assortment of hot, cold, alcoholic and non alcoholic drinks, cold and hot food, snacks and confectionery.

Opens one hour prior to events.



# Everest Bar

This is what the Everest Bar on Level 2 looks like.

From this bar you can purchase alcoholic and non alcoholic beverages, snacks and confectionery.

Opening hours vary depending on event times.

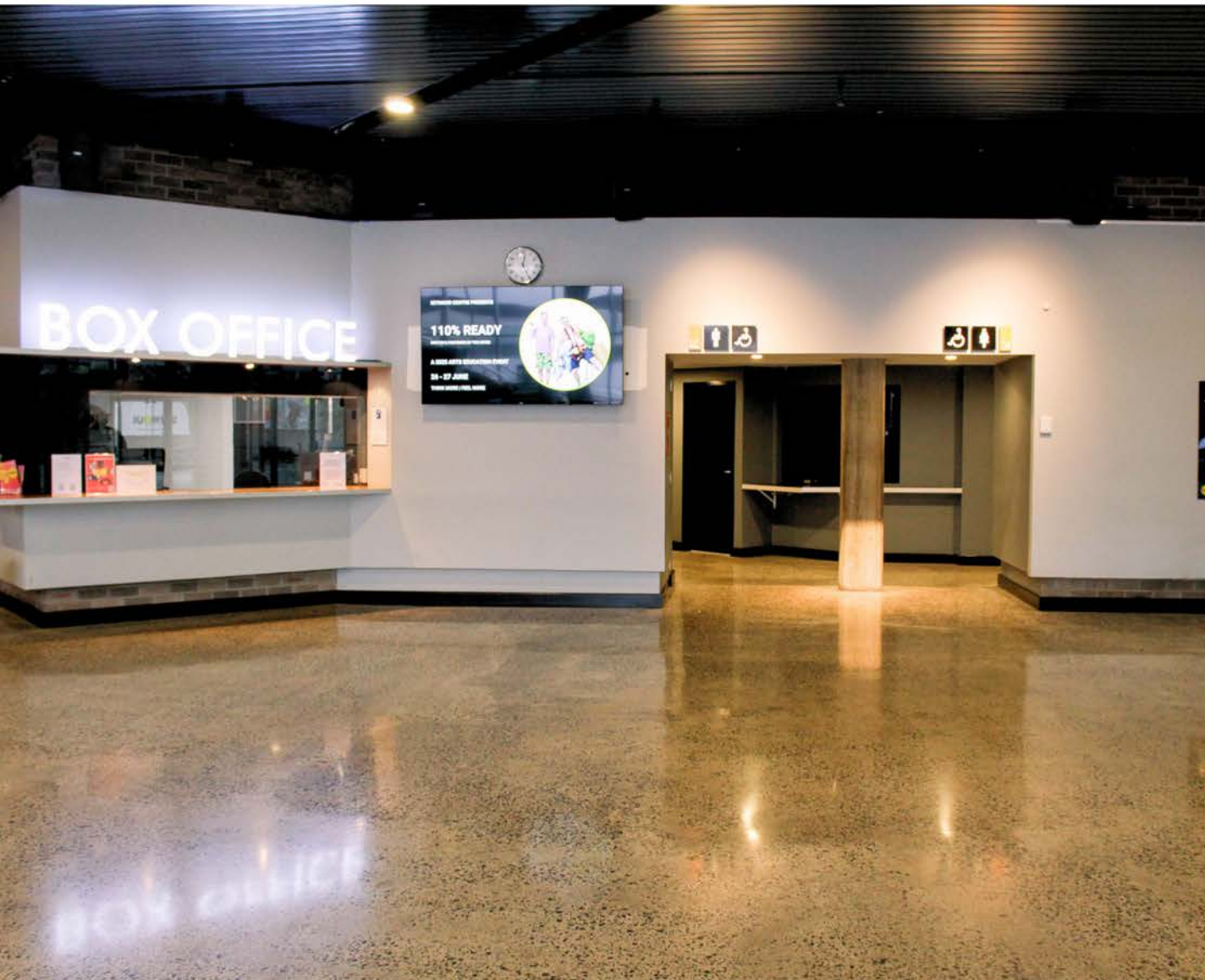




# Bathrooms

The bathrooms are located on Level 1 near the Box Office.

There are 14 female toilets, 5 male toilets and urinals and one all gender ambulant toilet.



# Lift

This is what the Seymour Centre lift looks like.

The lift is located in the centre of the building and stops at Ground, Level 1, Level 2 and Level 3.

There is an additional accessible lift to reach the Reginald Theatre and Sound Lounge on the Lower Ground floor.



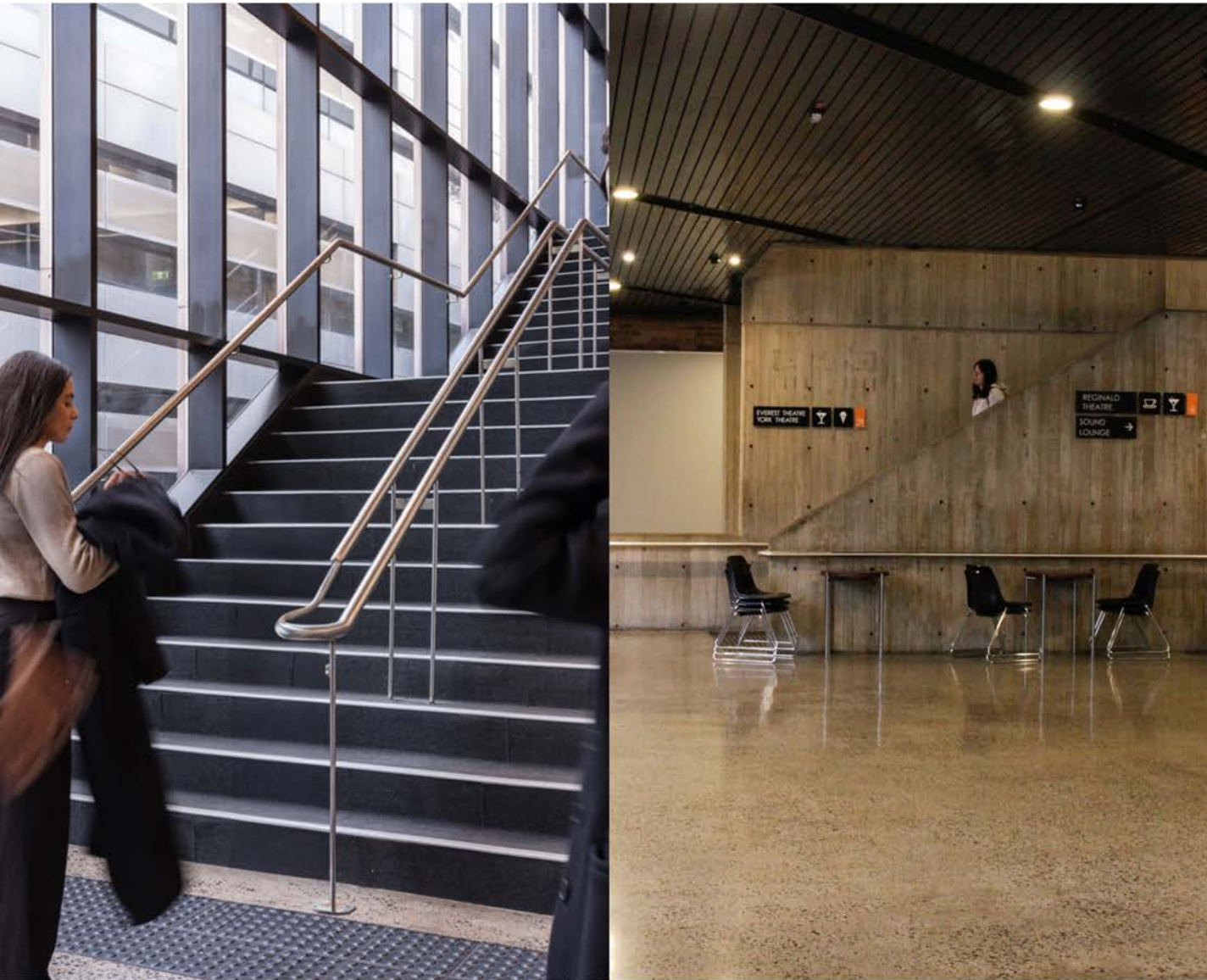


# Stairs

Seymour Centre has two main staircases on Level 1.

The first staircase on Level 1 is located behind the Box Office Cafe and has 25 steps to Level 2.

The second staircase on Level 1 is located opposite the main entrance and has 26 steps to Level 2.

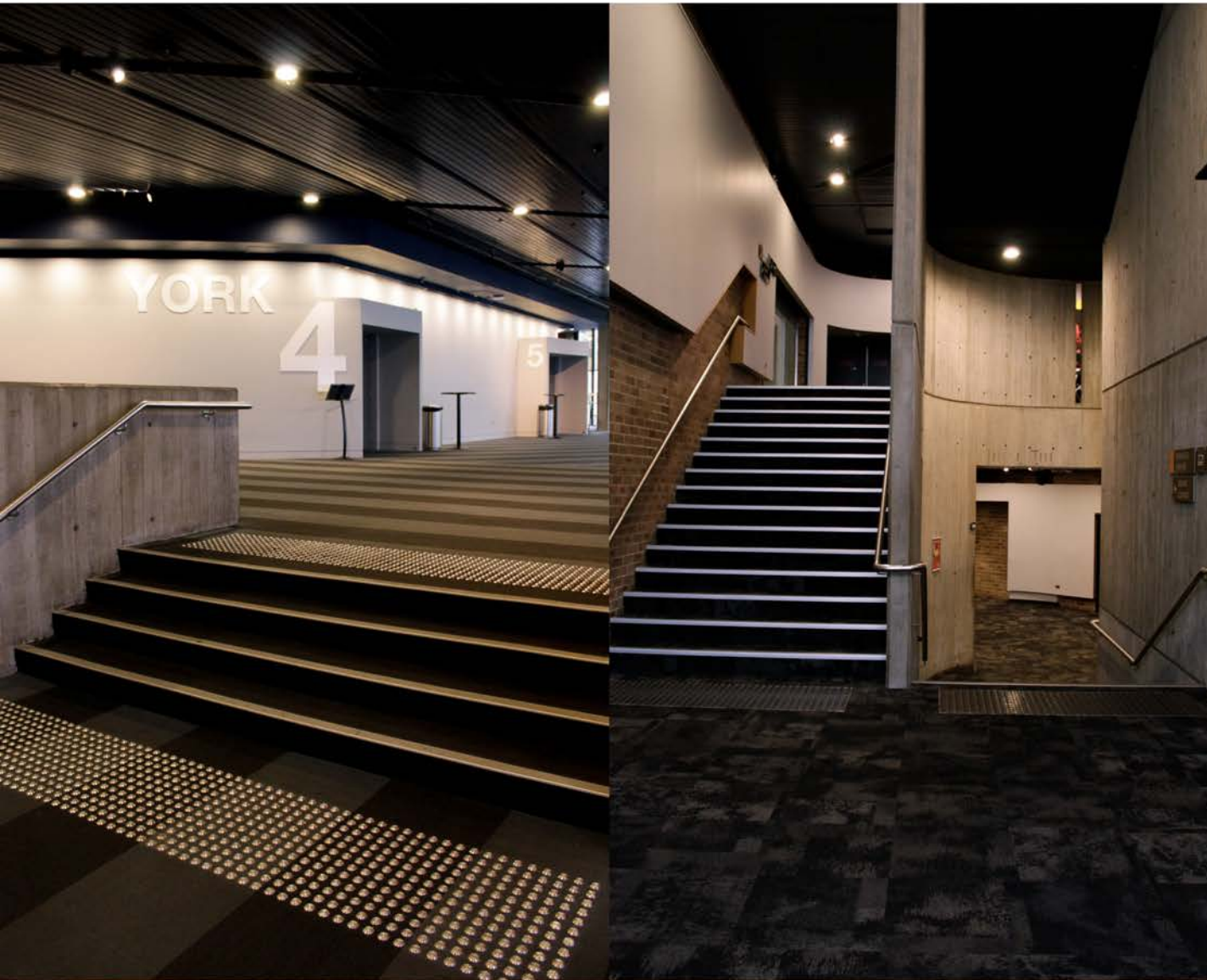


# Stairs

The additional staircases to the theatre foyers are:

4 steps from Level 2 to Level 3 for the York Theatre.

22 steps from Level 1 or 7 steps from the Ground Floor to reach the Reginald Theatre and Sound Lounge.







# Everest Theatre

The Everest Theatre is located on Level 2.

Level access is available through a separate entrance for Row E.

Entry and exit is at the back of the theatre.

Seat width is 430mm wide.



# York Theatre

The York Theatre is located on Level 3.

Level access seating is in Row M toward the back of the theatre.

Entry and exit is at the back of the theatre behind Row M.

Seat width is 430mm wide.







# Reginald Theatre

The Reginald Theatre is located on the Lower Ground floor.

Level access entry is in Row A closest to the stage.

Entry and exit is at the front of the theatre near Row A.

Seat width is 450mm wide.

# Sound Lounge

The Sound Lounge is located on the Lower Ground floor.

All seats in the space have level access from the Lower Foyer.

Entry and exit are at the back of the space.





# What to do when you have an upcoming event

Watching a live performance can be a fun and exciting experience. Here is a step-by-step guide on what to do to see a show at Seymour Centre.



Image credit: Karl Elbourne, Romeo and Juliet, 2024

# The Day Before

Check to see if you have your tickets ready.

We email the tickets at the point of purchase. In this email, there will be a PDF attachment of your tickets and links to add digital tickets to your Apple or Android wallet.

The email is from our Box Office.

Remember to check your spam folder if you cannot locate it.



## Booking Confirmation

Dear  
Thank you for your booking at the Seymour Centre.

ORDER NUMBER:  
ORDER DATE:  
DELIVERY METHOD:

Quantity	Despatch Method	Details	Price
2	Send via email		
			Total



Add to  
Apple Wallet



Add to  
Google Wallet





# The Day Of

The foyers will be open one hour prior to the event.

It is recommended that you arrive 30-minutes before the show starts.

Some events have a total lockout which means you cannot enter the theatre if you are late.

In the foyers, there will be an announcement for when the theatre doors are open.





# Doors

When the doors open, you are welcome to find your seat.

Your door and seat number will be listed on your ticket.

If you are unsure, you can always talk to our Front-of-House staff. They wear all-black uniforms with the Seymour logo.

The foyers, bars and bathrooms may be busy at this time.



# Showtime

Before the show starts, the theatre will go dark.

During the performance, there may be loud noises, haze, smoke and bright or flashing lights.

You are welcome to leave the theatre during the show, however, you may not be able to return to your seat if there is a total lockout. Please talk to our staff if this is of concern.



Image credit: Philip Erbacher, Arlington, 2024



# Applause

When the show finishes, the lights will come up and the performers will come on stage to bow for the curtain call.

Audience members can clap during the bows to show their appreciation.

Leaving the theatre after the show can feel congested. You can remain in your seat for a few minutes while the space clears.





# Thank You



Thank you for attending a performance at Seymour Centre. We hope you enjoyed the experience.

If you have any questions please contact our Box Office staff by phone or email.

02 7255 1561  
[boxoffice@seymour.sydney.edu.au](mailto:boxoffice@seymour.sydney.edu.au)  
[seymourcentre.com](http://seymourcentre.com)

# Seymour Centre Map

